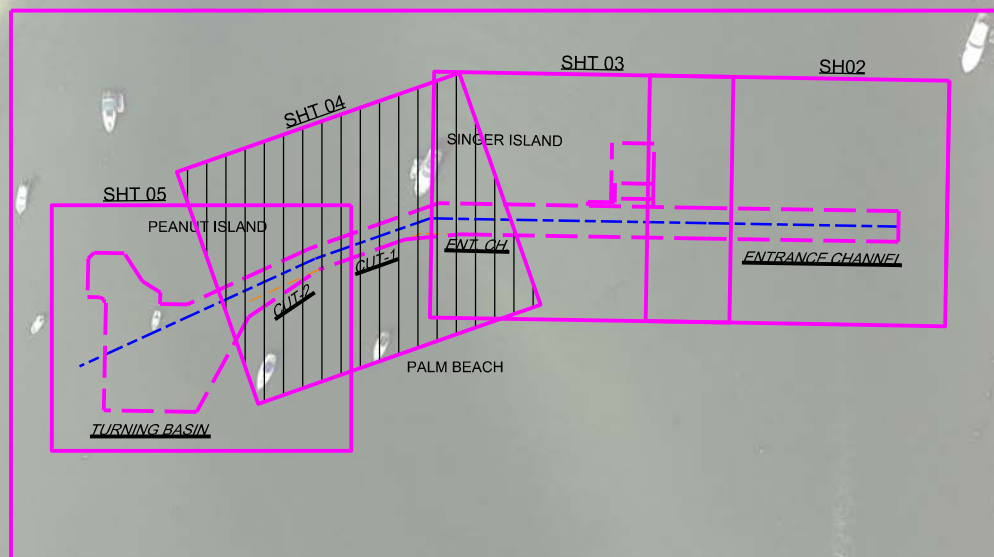


MAP LABEL	AIDS TO NAVIGATION	PLANE COORDINATES		LATITUDE	LONGITUDE
		X	Y		
R*6"	LT. BUOY-6 (06/22)	970,557	887,945	26°46'23.76"	80°02'11.17"
G*7"	LT. BUOY-7 (06/22)	969,929	887,385	26°46'18.26"	80°02'18.14"
R*8"	LT-8 (06/22)	969,291	887,601	26°46'20.45"	80°02'25.17"
G*9"	LT-9 (06/22)	968,825	886,908	26°46'13.62"	80°02'30.37"
R*10"	LT-10 (06/22)	968,199	887,157	26°46'16.13"	80°02'37.25"
INFO SIGN	SIGN (06/22)	970,083	887,370	26°46'18.10"	80°02'16.45"



US Army Corps of Engineers
Jacksonville District

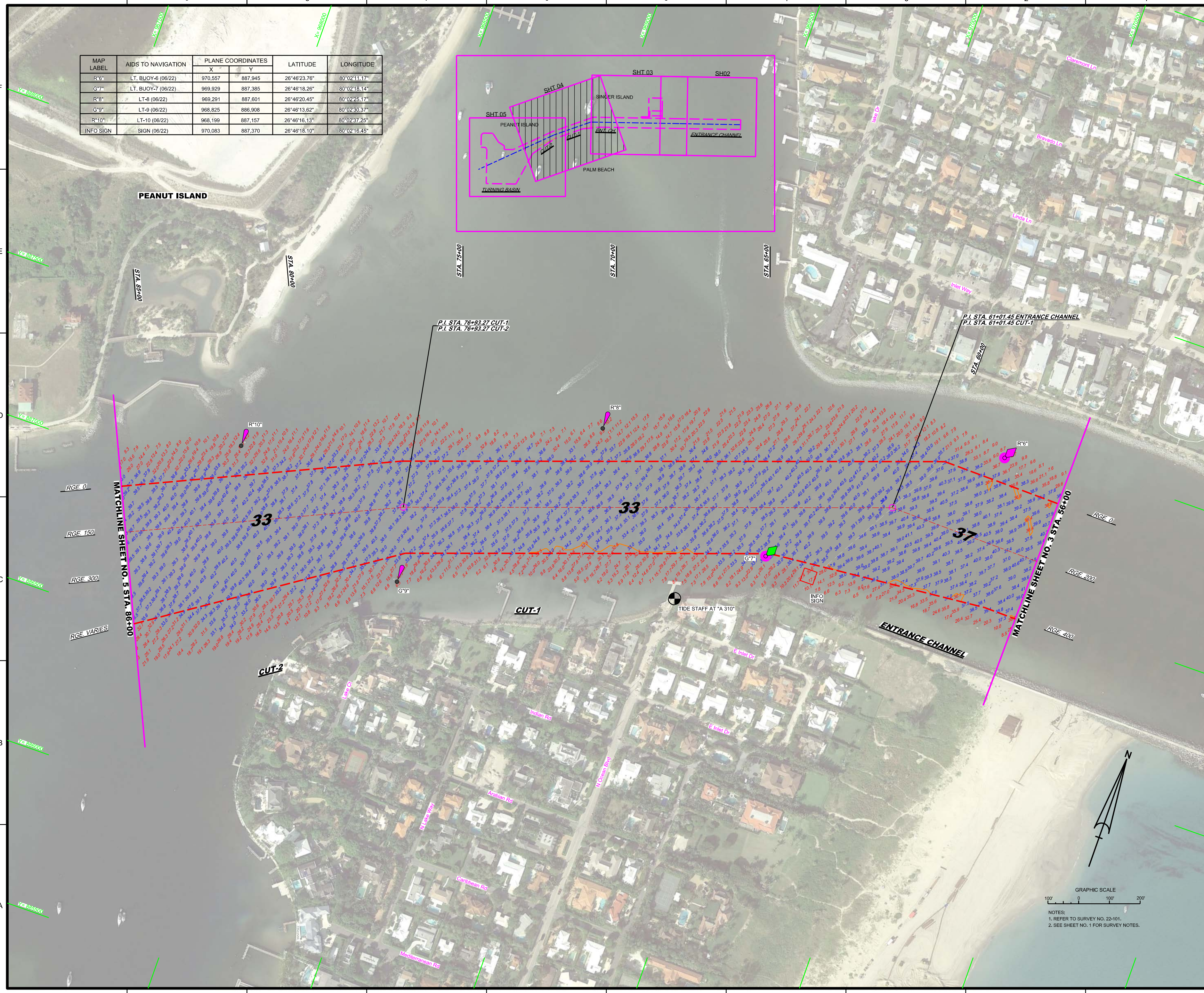
SAFETY ON THIS JOB
DEPENDS ON YOU

DEPARTMENT OF THE ARMY
JACKSONVILLE DISTRICT, CORPS OF ENGINEERS
JACKSONVILLE, FLORIDA

Scale: AS SHOWN

Drawing no. **4**

SHEET 04 OF 05



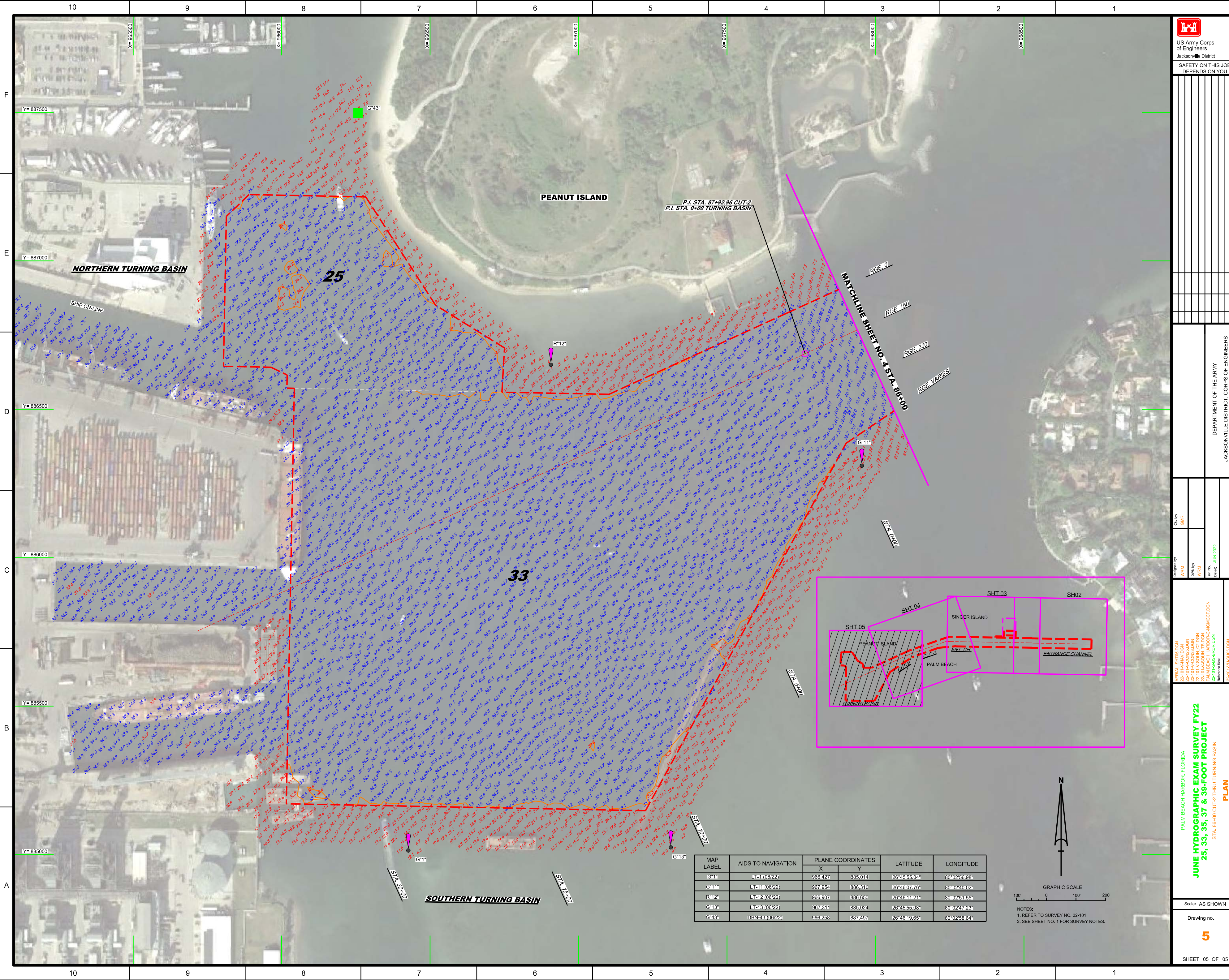
PLANNING

JUNE HYDROGRAPHIC EXAM SURVEY FY22
25, 33, 35, 37 & 39-FOOT PROJECT

STA. 86+00 ENTRANCE CHANNEL THRU STA. 86+00 CUT-2

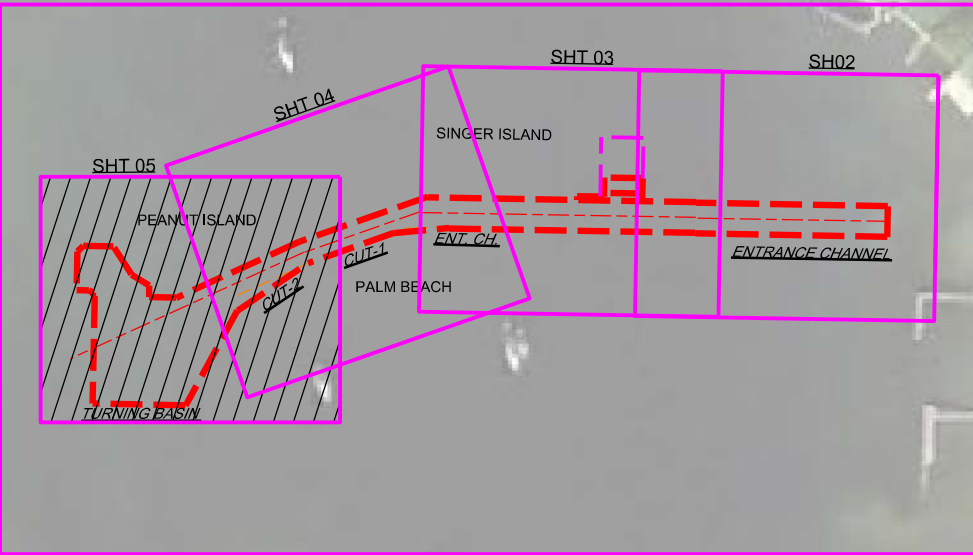
PLANNING

NOTES:
1. REFER TO SURVEY NO. 22-101.
2. SEE SHEET NO. 1 FOR SURVEY NOTES.

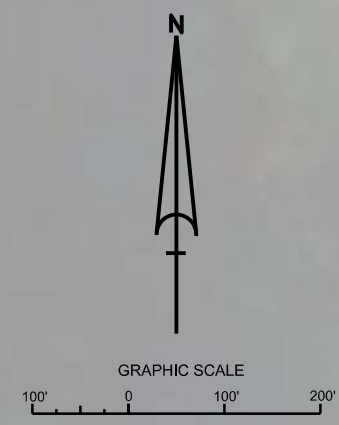


P.I. STA. 87+92.96 CUT-2
 P.I. STA. 0+00 TURNING BASIN

MATCHLINE SHEET NO. 4 STA. 86+00
 RGE. 0
 RGE. 150
 RGE. 300
 RGE. VARIES



MAP LABEL	AIDS TO NAVIGATION	PLANE COORDINATES		LATITUDE	LONGITUDE
		X	Y		
G*1	LT-1 (06/22)	966,427	885,014	26°45'55.04"	80°02'56.98"
G*11	LT-11 (09/22)	967,954	888,810	26°46'07.76"	80°02'40.02"
R*12	LT-12 (09/22)	966,907	888,650	26°46'11.21"	80°02'41.65"
G*13	LT-13 (09/22)	967,311	885,024	26°45'55.08"	80°02'47.23"
G*43	DBN-43 (09/22)	966,258	887,497	26°46'19.65"	80°02'58.64"



NOTES:
 1. REFER TO SURVEY NO. 22-101.
 2. SEE SHEET NO. 1 FOR SURVEY NOTES.